

# Westbrook Decorative Fence

## Installation & Use

### Parts



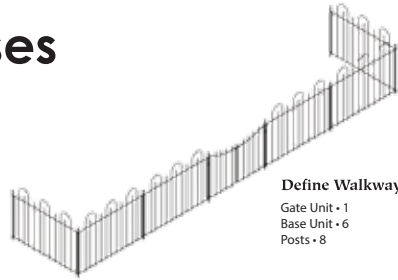
**Gate**  
Create beautiful entrances or walkways.



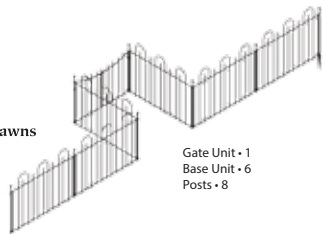
**Base**  
Link together to build your dream fence.

**Post & Stake**  
Link, support & anchor all unit sections.

### Uses

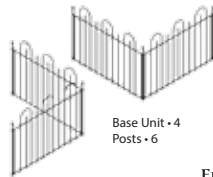


**Define Walkways**  
Gate Unit • 1  
Base Unit • 6  
Posts • 8



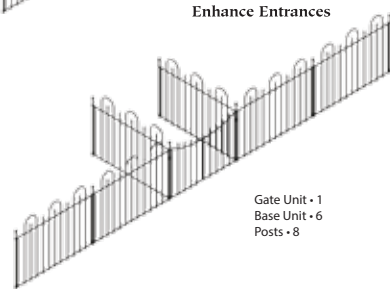
**Border Lawns**

Gate Unit • 1  
Base Unit • 6  
Posts • 8



**Emphasize Paths**

Base Unit • 4  
Posts • 6



**Enhance Entrances**

Gate Unit • 1  
Base Unit • 6  
Posts • 8

**Protect Trees**

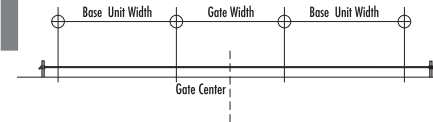


Base Unit • 4  
Posts • 4

*Caution: Rocks may need to be removed from ground before driving stakes to avoid damaging product.*

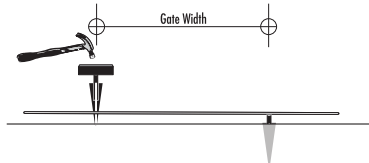
### Installation

# 1



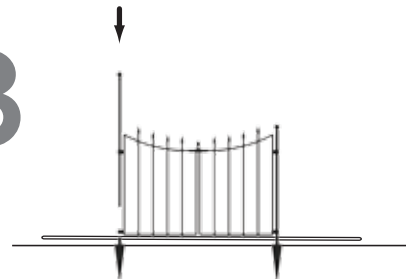
Stretch line along desired fence path. Determine starting point, usually a corner, the fence center or a gate position.

# 2



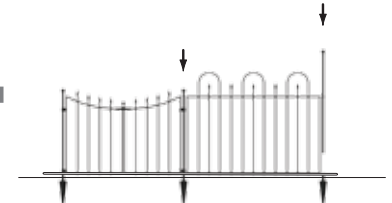
Hammer first stake into ground, aligned to string line. Stake fin tops should be at ground level with sleeve extending above. For gate, determine gate unit width and hammer second stake.

# 3



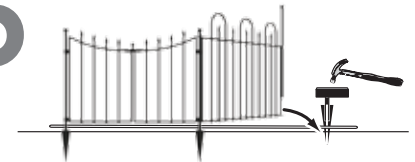
Insert posts through gate or fence rings and down into stake sleeves.

# 4



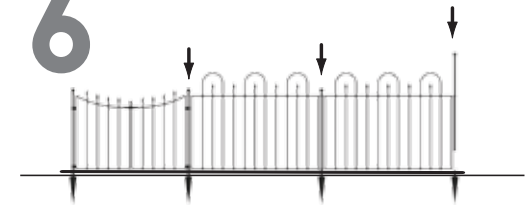
Slide post through outer ring set & into the soil to mark next stake position.

# 5



Swing fence section, hammer next stake into position.

# 6



Repeat procedure until all fence sections are in place. When end unit is attached and positioned the end stake is pushed into ground. End units may be placed perpendicular to fence or gates for stability.